



Curragh Operational Tour

Analyst Briefing

Wednesday 17 May 2006



Overview

Stewart Butel
Director Coal Operations

Wesfarmers Energy



Mine Location





FY 2004/05

Production Volume mt 7.0

Sales Volume

Export mt 4.6

Domestic mt 2.5

Customers 14

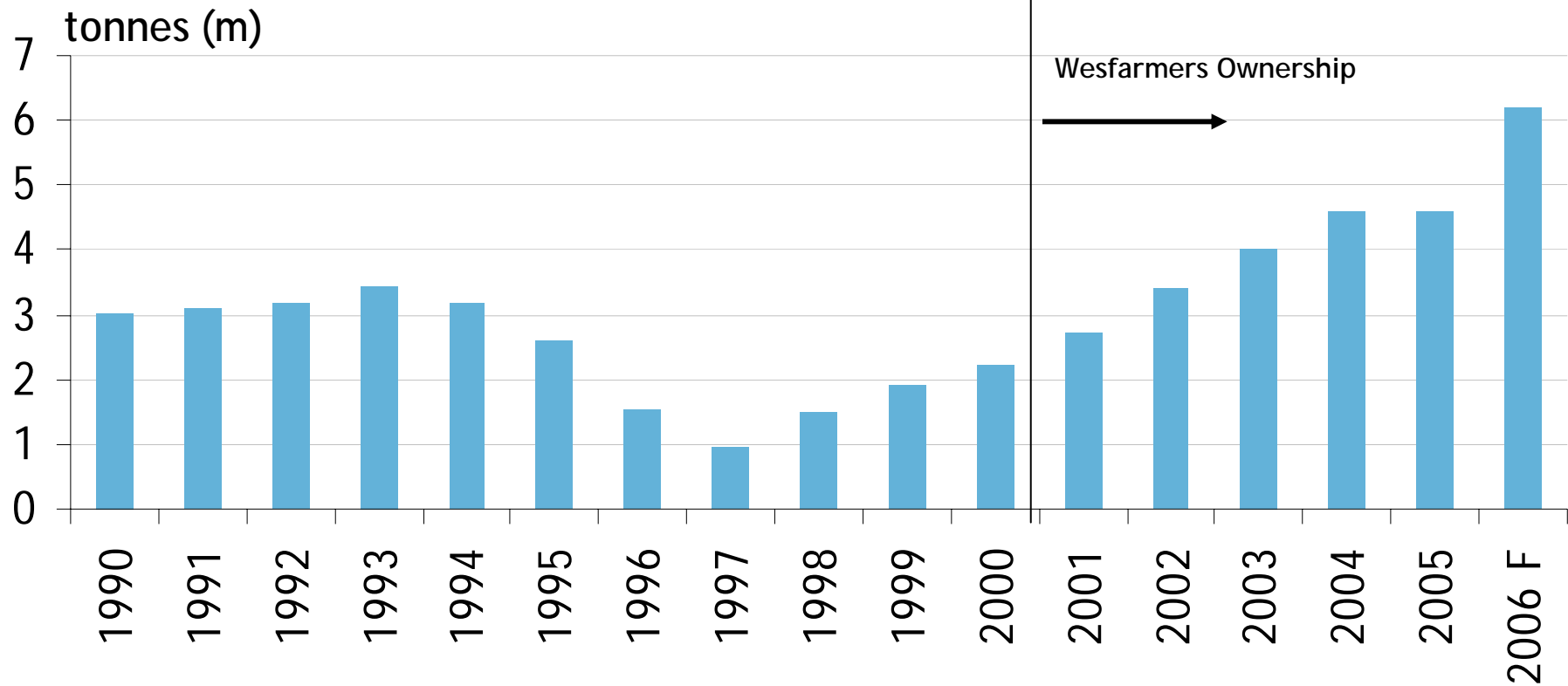


Curragh - a brief history



- Mine opened 1983
- Wesfarmers purchase of Curragh June 2000
- Lease granted for Curragh East (+60Mt) October 2000
- Mining commenced at Curragh East July 2002
- CHPP Upgrades Aug 2002/Oct 2004
- Awarded rights to Curragh North ('CN') December 2002
- New mining lease granted CN (+130Mt) August 2004
- Curragh North Development 2004 - 2006

Curragh Export Sales Growth





- Availability and cost of key inputs
- Global shortage of earthmover tyres
- Availability and cost of skilled labour
- Industry-wide capital over-runs and delays

Curragh's Complexity Challenge



Activity	Metric	Pre Curragh North	Post Curragh North
Area Disturbed by Mining	ha	3,860	5,945
Deposit Strike Length	km	13	30
Total Overburden Removal	mbcm	97.3	131.7
Tonnes Mined	mt	8.7	12.1
CHPP Capacity	t/hr	1,200	1,600
Resource Complexity - raw coal types	no.	3	6
Average Workforce (FTE incl contractors)	no.	544	789
Activity Man-hours (FTE incl contractors)	m hrs	1.1	1.9

Coal Production



Mine	Beneficial Interest	Coal Type	9 months	
			Mar-05	Mar-06
Premier, WA	100%	Steaming	2,550	2,842
Curragh, QLD	100%	Metallurgical	3,198	4,509
		Steaming	1,695	2,052
Bengalla, NSW	40%	Steaming	1,656	1,739
Total			9,099	11,142

Market Update

Rob Brenchley
Director Coal Marketing and
Development

Wesfarmers Energy

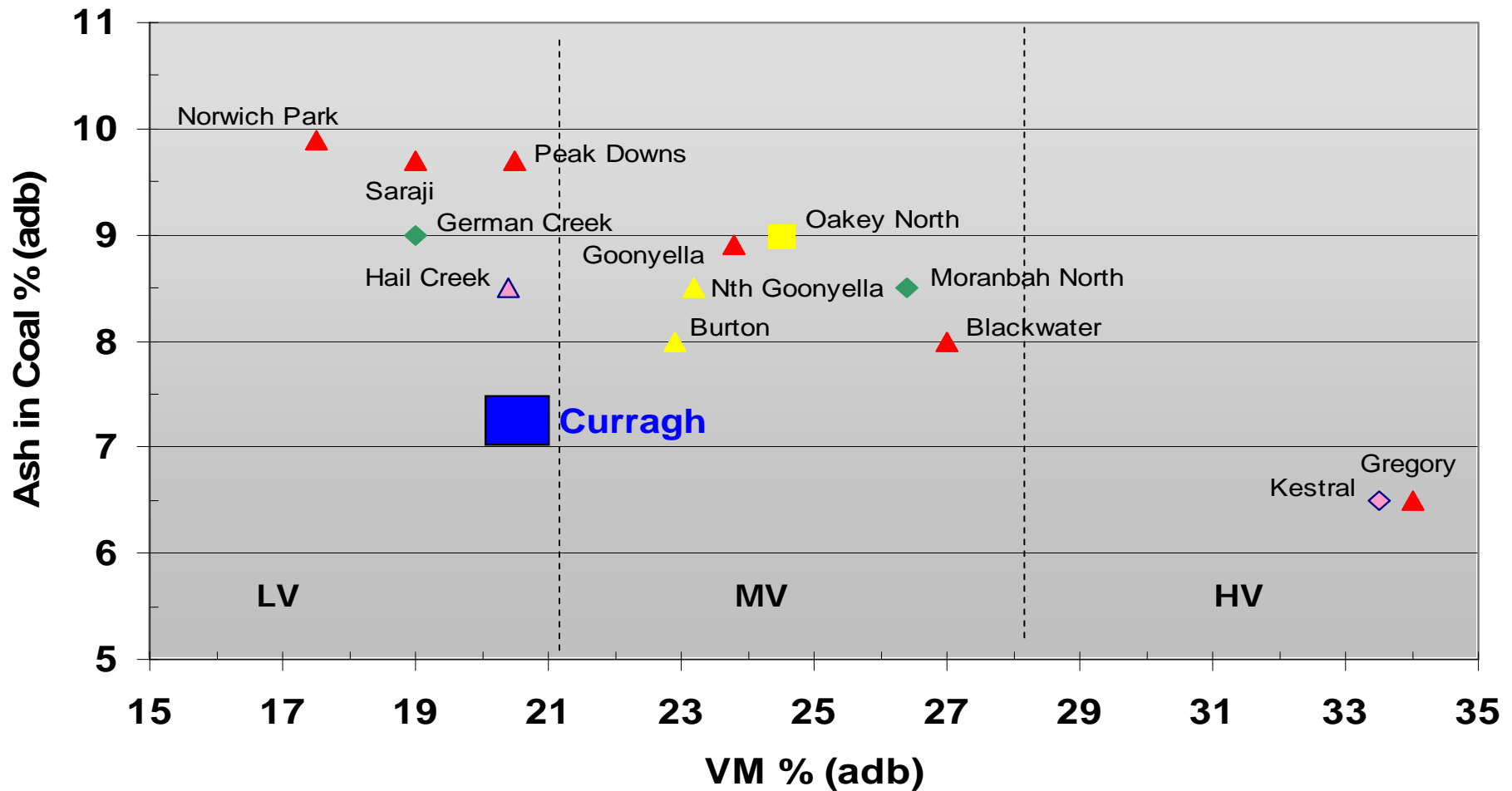


Curragh Export Sales



- Established Curragh brand and quality
- Positioned as “independent” supplier
- Diversified product range
- World leading steel makers as key customers
- Positioned for future growth

Queensland Hard Coking Coal Indicative Quality Comparison

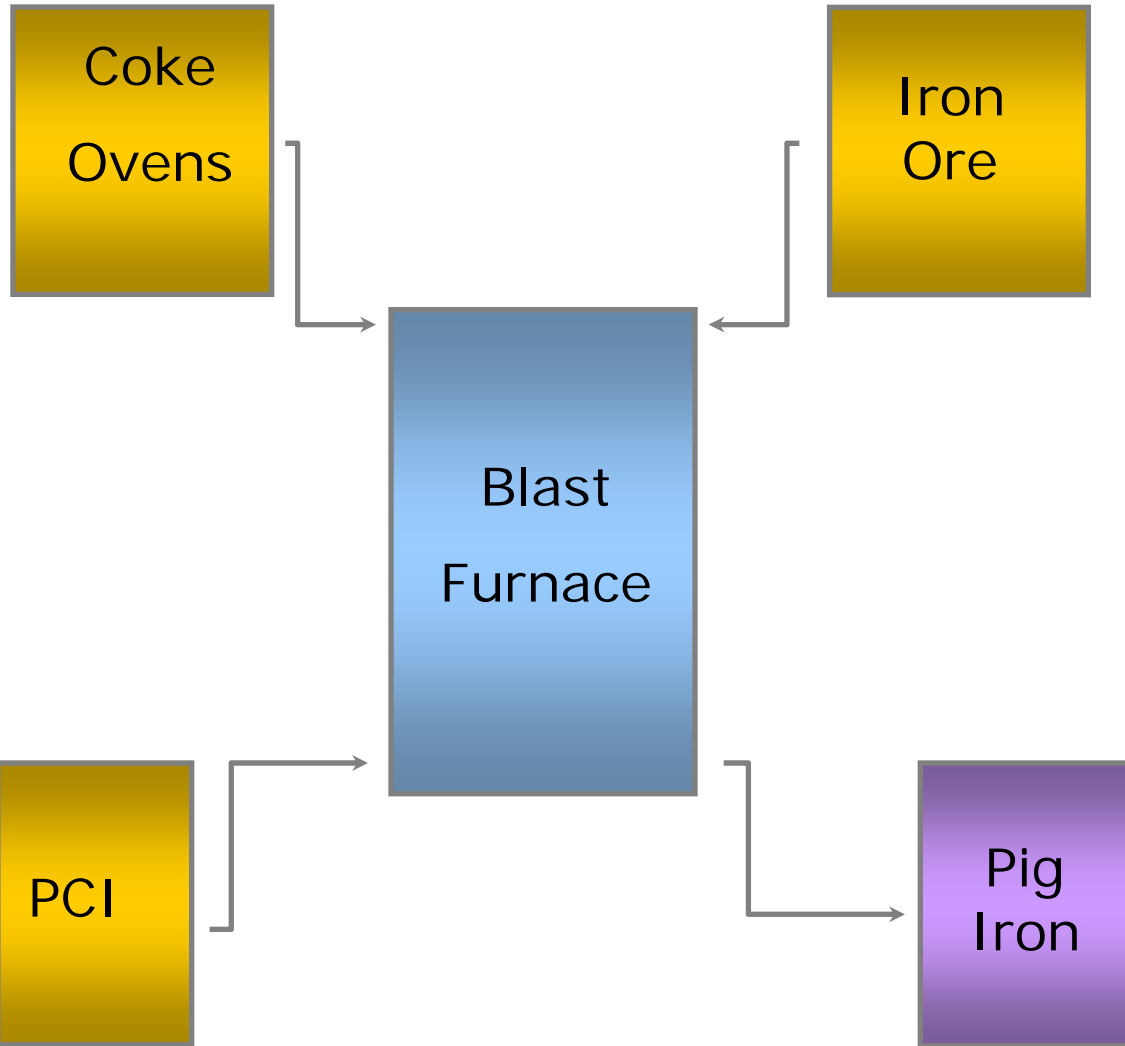


Source: Barlow Jonker

Blast Furnace Steel Making

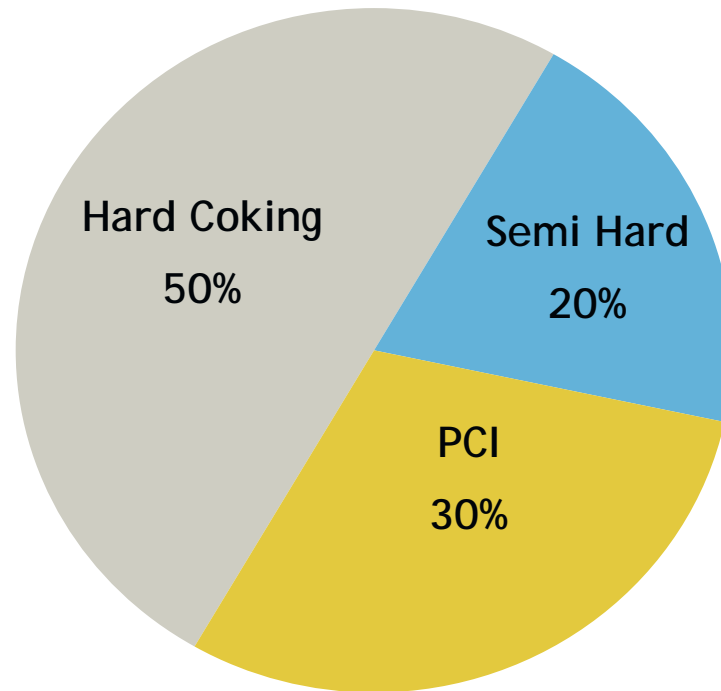


LV Coking Coal
MV Coking Coal
HV Coking Coal
Semi Coking Coal



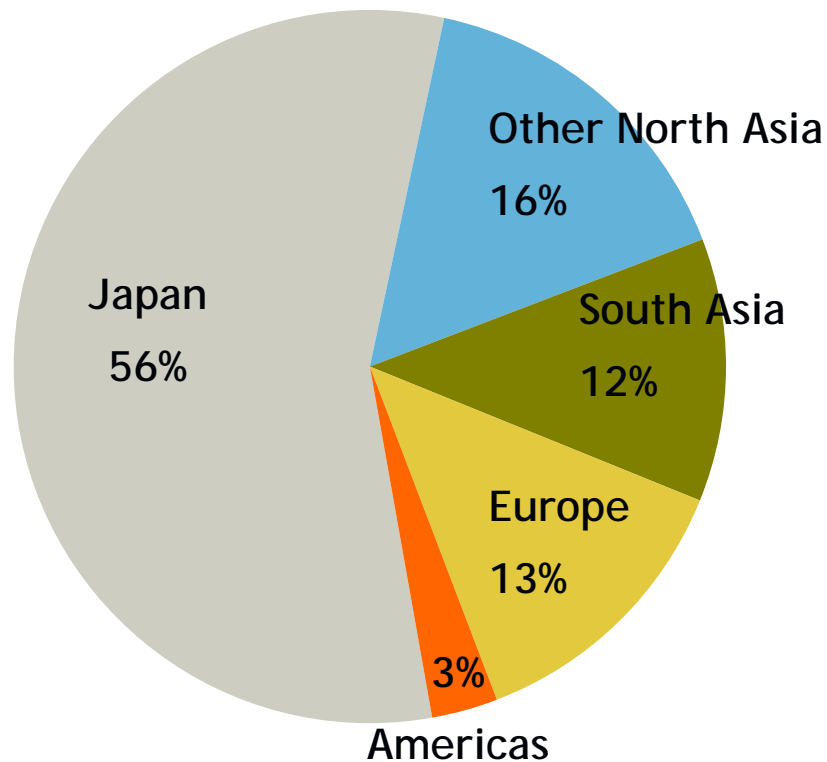
Curragh Export Sales

Sales Mix Estimate 2006/07



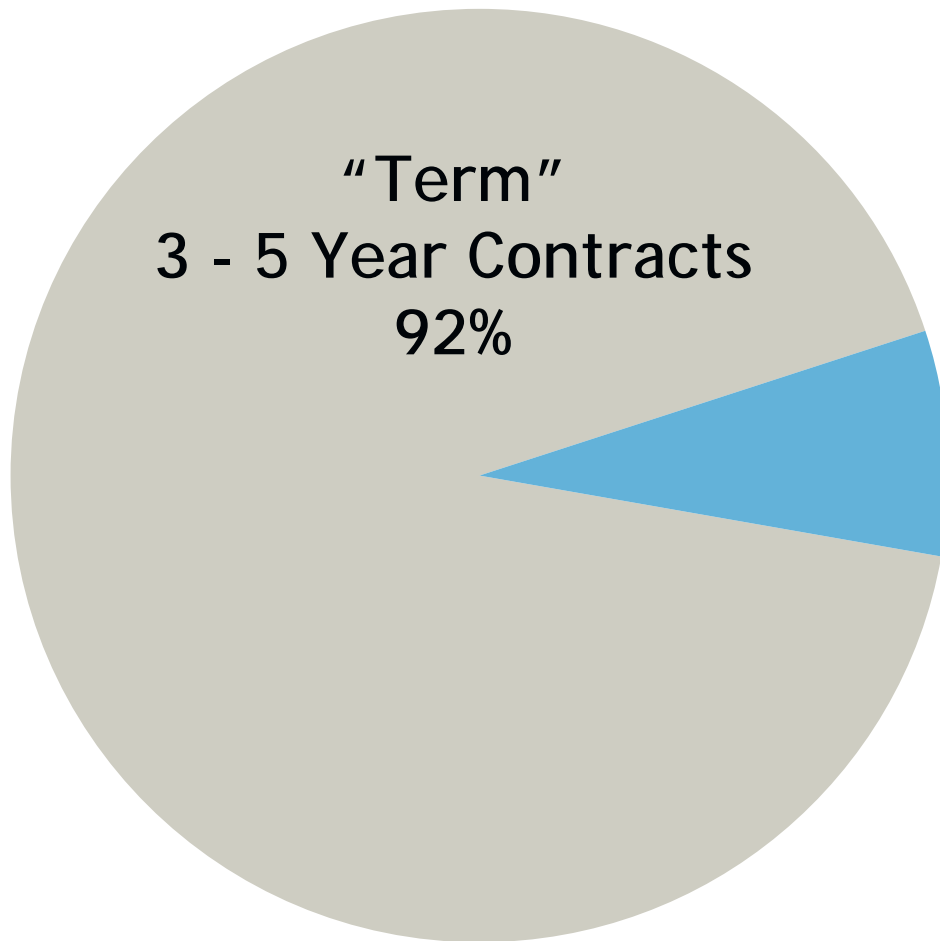
Curragh Export Sales

Customer Mix 2006/07



Curragh Export Sales

Contract Duration 2006/07



"Annual"
1 Year Contracts
8%

Gladstone Coal Delivery System

Export Capacity Upgrade Delays



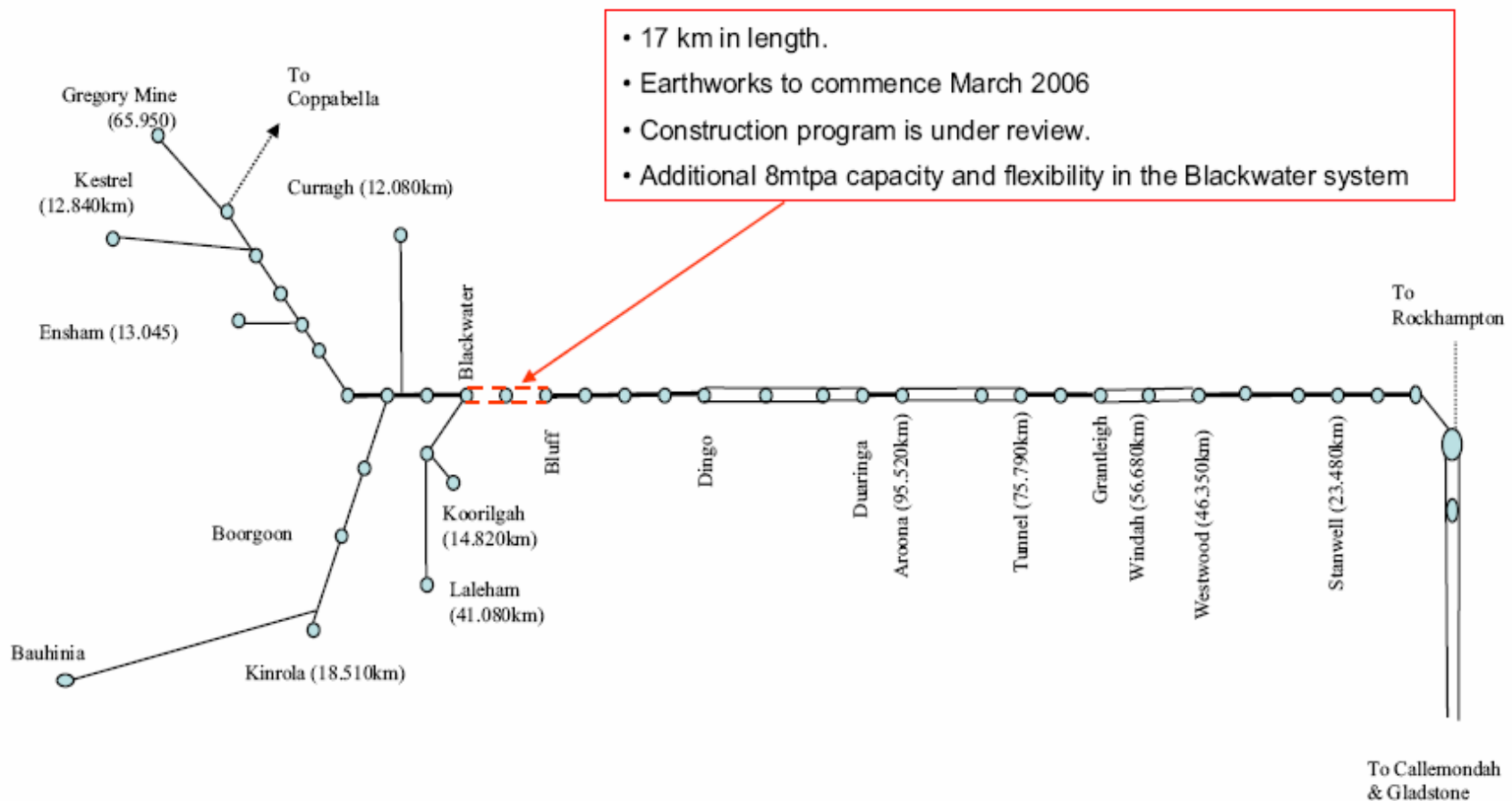
	Original Completion Date	Revised Completion Date (as at May 2006)
QR (Rail) Blackwater to Bluff Duplication	September 2006	July 2007
CQPA (Gladstone Port) 3rd Train Dump Station	July 2006	November 2006

- Curragh's expected GCDS capacity in 2006/07 - 7.5mt
- 2006/07 capacity now uncertain

QR Rail Duplication



Bluff to Blackwater Duplication





RG Tanna Coal Terminal Expansion – Coal Unloading

Third Rail Unloading Station



- Target Completion Date - November 2006

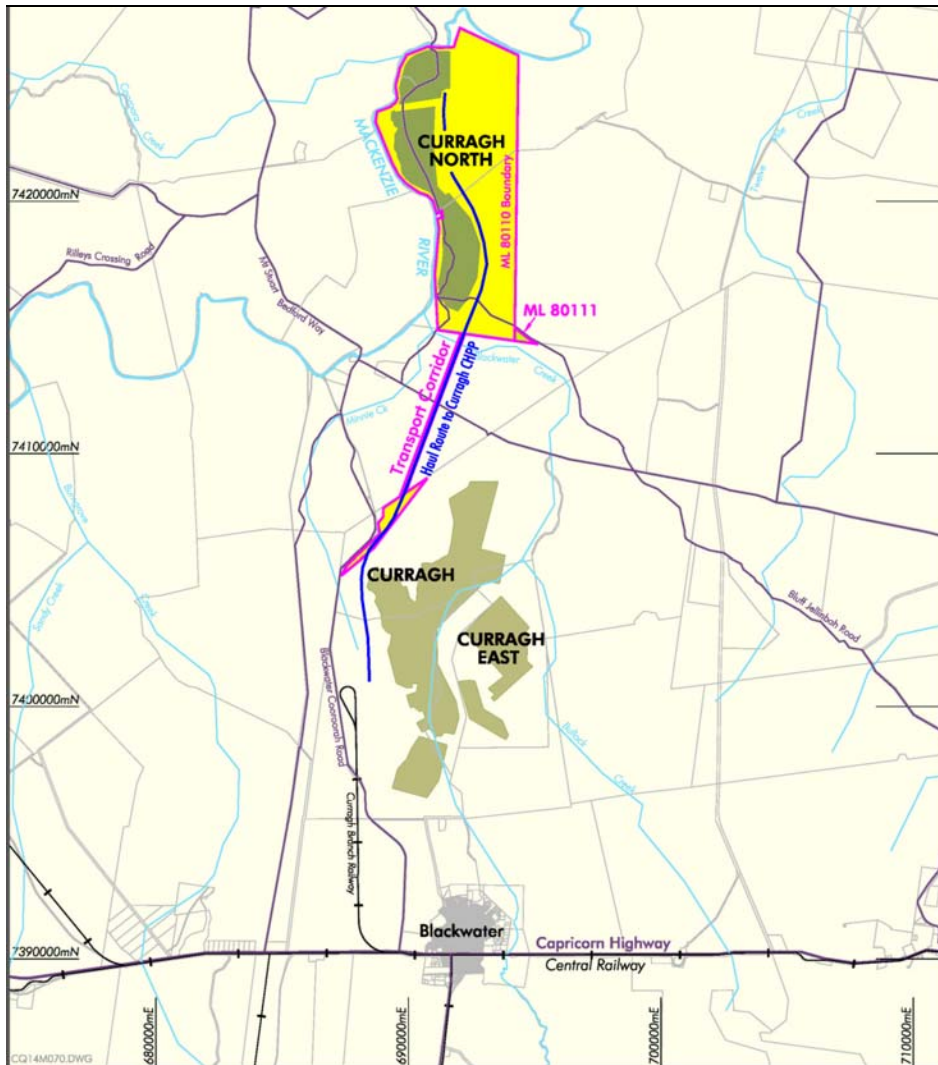
Curragh North Development

Murray Bailey
Executive General Manager

Curragh Queensland Mining Pty Ltd



Curragh North Project



- 20km north of Curragh
- +130mt of mineable reserves
- 40 year mining lease
- linked by private road to Curragh
- limited site facilities
- developed as a remote pit
- all coal processed at Curragh

Curragh North Summary



- Increased coal reserve base
- Extended open cut mine life to 2025
- Capital Expenditure \$360M
- Increased export volumes
- New “PCI” product
- Supporting current customers



- 3 pits - North (Pit U), Central (Pit T) and South (Pit S)
- Mine Lease area 4800ha
- Adjacent to the MacKenzie River
- Mining west to east
- 2 draglines from Curragh for overburden removal
- Truck and shovel pre-strip
- Coal to Curragh for processing and rail

Mine Plan

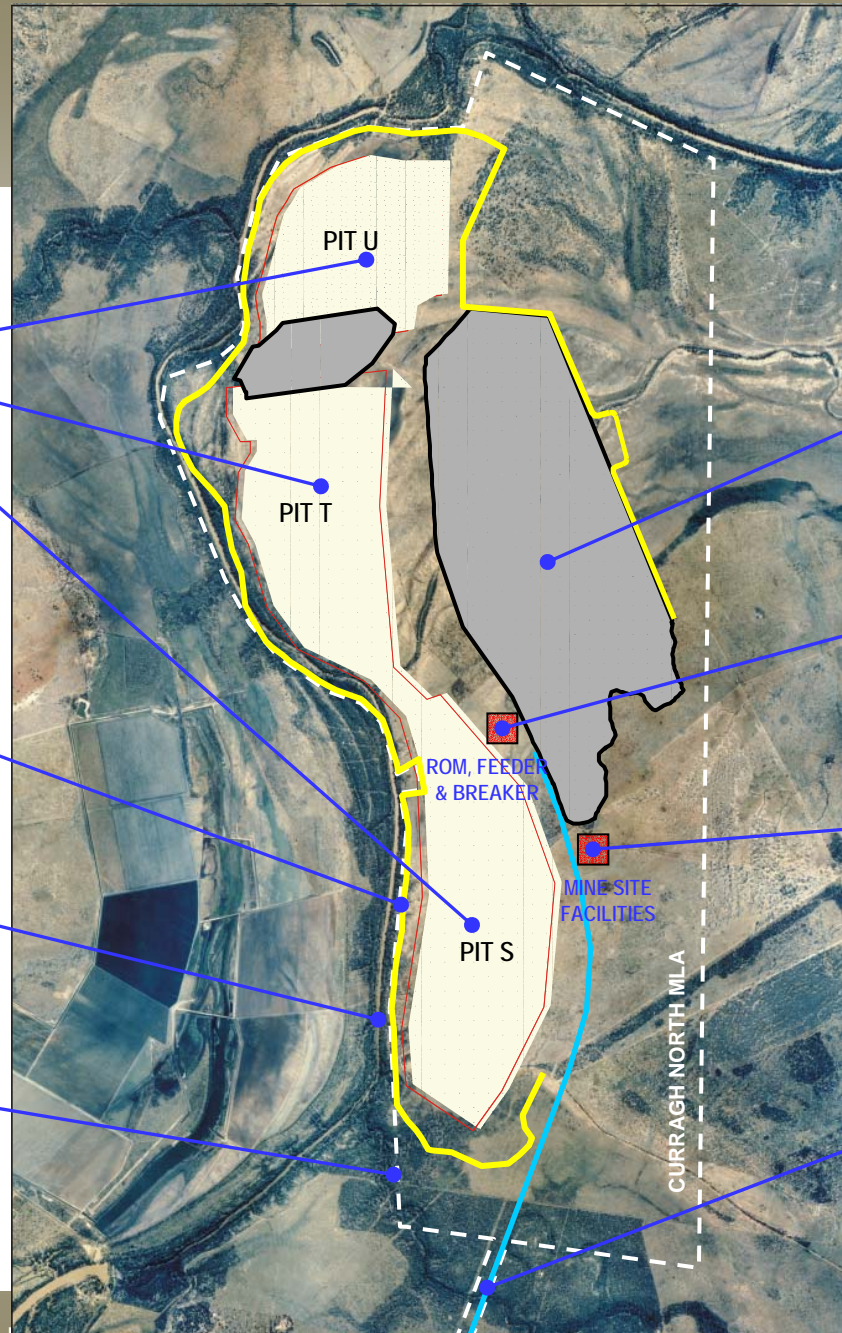


MINING BLOCKS

FLOOD PROTECTION LEVEE

MacKENZIE RIVER

MINING LEASE BOUNDARY



SPOIL DUMP

- Out of Pit Spoil revegetated as soon as practical.

COAL DUMP HOPPER

- Coal crushed at CN
- Conveyor to Curragh.

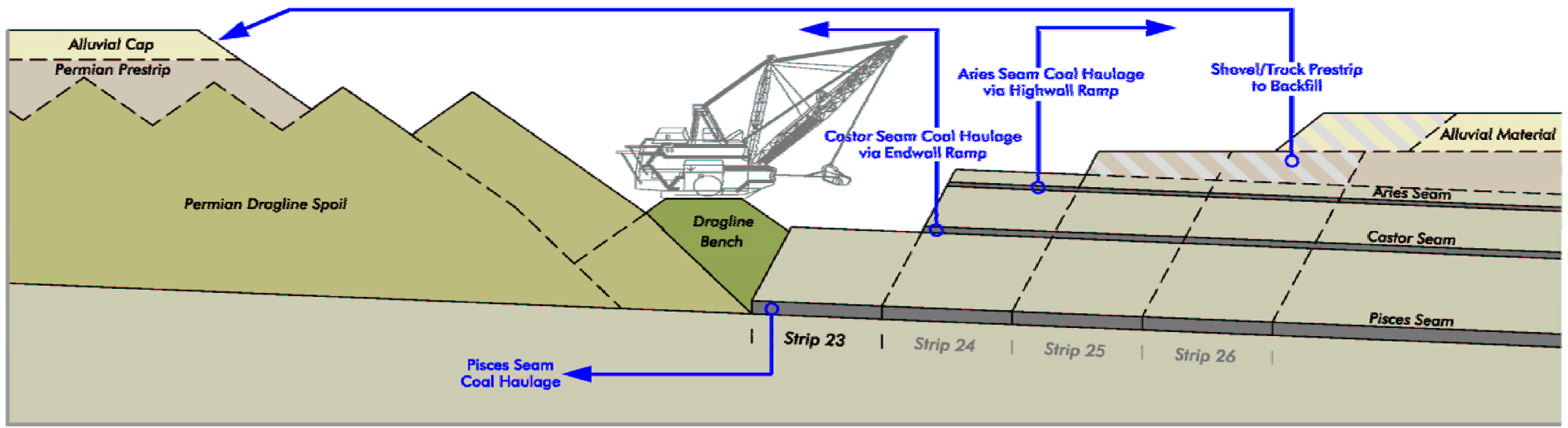
MINE INFRASTRUCTURE

- Minimised by utilising Curragh Mine facilities.
- Limited On site facilities

TRANSPORT CORRIDOR

- Private road
- Conveyor.

Mining Methods





- Contractor boxcut and pre-strip for first 5 years
- Curragh infrastructure utilised for:
 - Coal handling and crushing
 - Coal processing
 - Stockpiling
 - Rail load-out
- Dragline relocations to CN in 2006 & 2007

Run-of-Mine Coal Transport

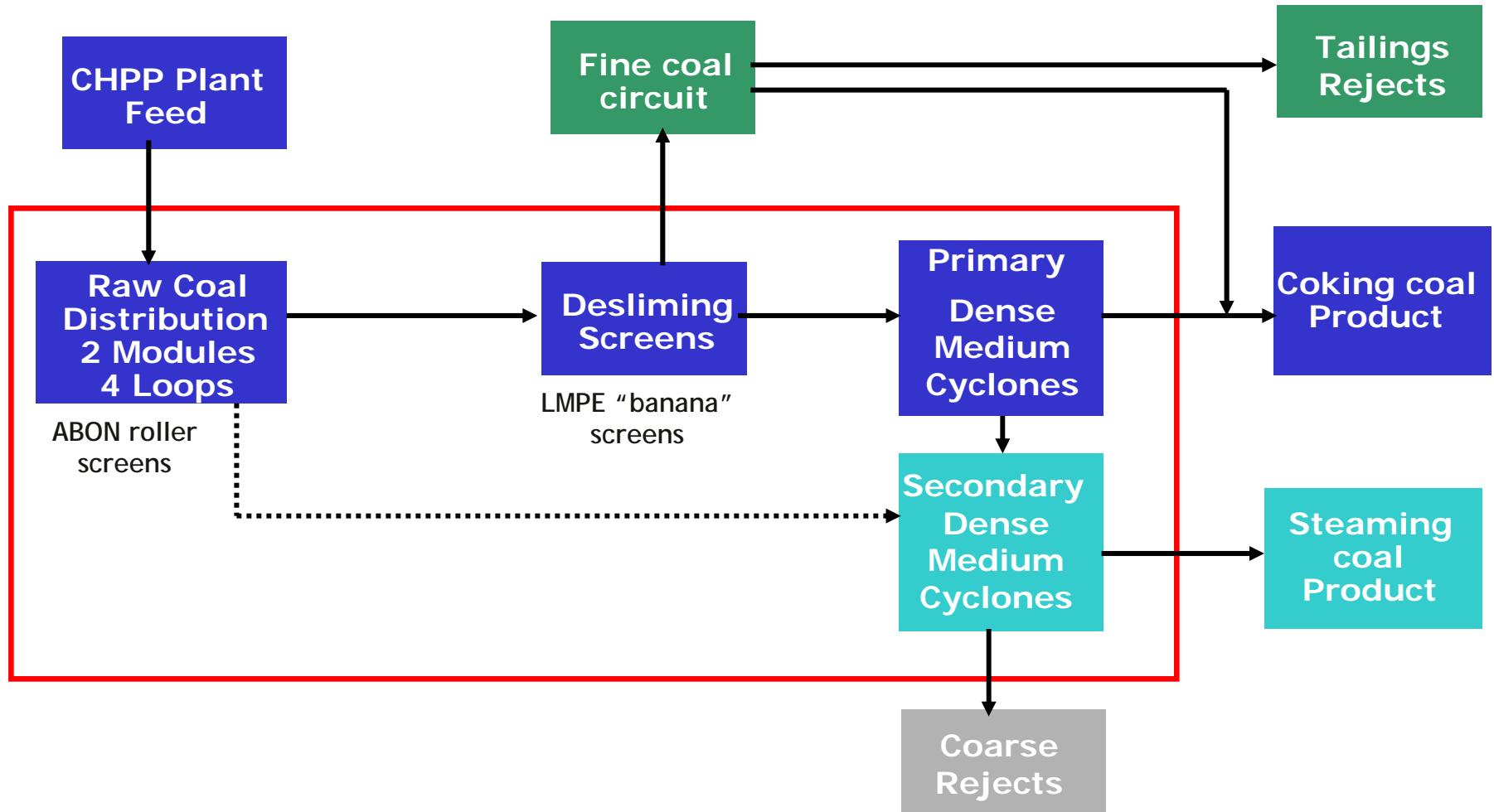


- Initial Development Phase:
 - Contractor road train
 - Up to 500,000 tonnes per month
- Long Term:
 - 20.3km single flight conveyer

Benefits:

- Avoids extensive upgrade of existing handling system
- Lowest cost
- Lowest operating risk
- Sized for future growth

Coal Handling & Preparation Plant Processing Flow Chart (general arrangement)



Coal Handling & Preparation Plant



- 4,320 sq m area
- 27m high
- built 1982/3
- 2 parallel modules
- 24 screens
- 43 pumps
- 444 electric motors
- 26,000m piping

CHPP - the value driver “throttle”



Mining Activities

- topsoil removal
 - drilling
 - blasting
- overburden removal
 - mining
 - hauling
- stockpiling

Coal Handling & Processing



Logistics Activities

- customer demand
- train scheduling
 - TLO & railing
- port stockpiling
 - shipping



- **Curragh North - civil construction**
 - Civil Contract signed Oct 2004
 - Civil works commenced Nov 2004
 - Completed Dec 2005
 - On time and within budget; Lost time injury free
 - Materials handling system due for completion in Q4 CY 2006
- **Curragh North - mining**
 - Mining lease granted July 2004
 - Mining Contract signed Oct 2004
 - Overburden removal commenced Nov 2004
 - First coal exposed Feb 2005
 - First coal mined & processed April 2005
 - 3.3Mt mined to date

For all the latest news visit
www.wesfarmers.com.au

